

Hanging Screen

# Solar

Timeless  
Practical  
Impactful



Friends of Wilson

Solar is a practical and beautiful hanging screen made from 100% wool felt.

Solar is built on a flexible modular system with static or sliding panels. Screens can be layered on the multi-channel sliding track to easily and quickly close off and open up areas.

Each panel is made from durable natural wool fibres that are easy to keep clean and long-lasting. Plus they can be easily swapped out thanks to the easy-to-use velcro fixing.

Choose from eighteen vibrant and muted shades and three standard panel sizes. Or request alternative colours and panel sizes as a special order.



# Solar

## Application

Solar hanging screen is a versatile, easy to install screening solution for all kinds of interior spaces including:

- Open plan office
- Reception
- Restaurant
- Board and meeting rooms
- Glass fronted meeting rooms
- Break out spaces
- Home office

## Specification

- Screen sizes 1200 x 2280 / 1200x2500mm / 1200x3000mm
- Custom sizes available
- 5mm thick, die cut 100% wool felt panel
- Sliding or static screens
- Multi-channel track for layered, sliding screens
- Natural flame resistant wool fibres
- Tested to BS 5867: Part 2: 2008. 1997 Class 1Y. Passes Crib 5
- Screen weight 3.7kg (1200x2280mm) Felt density: 0.30g/cm<sup>3</sup>
- Pantone colour match available

## Features

- 100% renewable, biodegradable and non-toxic natural wool material
- Modular design suitable for small or large spaces
- Allows areas to be quickly and easily screened off and opened up
- Diffuses sound and light for increased privacy and comfort
- Smooth running and durable track system
- Self-extinguishing and inherently flame retardant wool fibres
- Designed and made in the UK

## Hanging track



### Sliding

Alter the experience with two to five channels for layered screen installations



### Ceiling

fixed directly to ceilings for static screen installations



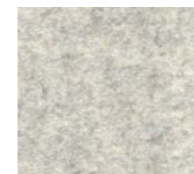
### Suspended

Fixed to vertical posts for static screen installations; avoiding lights and air-conditioning

## Colour palette



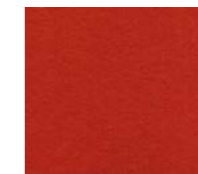
Azure



Beige Brown



Blue



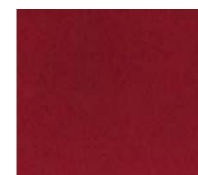
Orange



Petrol



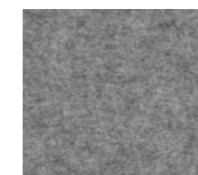
Ruby



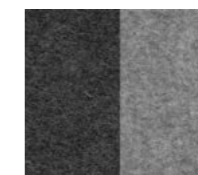
Cherry



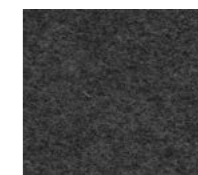
Fire



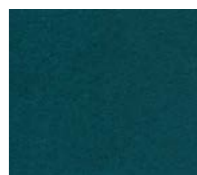
Grey



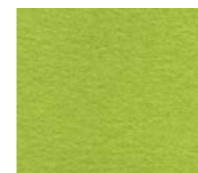
Slate / Grey



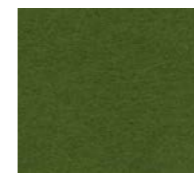
Slate



Teal



Lime



Moss



Mustard



Turquoise



Violet



Yellow



Available in a range of natural colours, Solar combines art, design and acoustics to give you a visually rich screening solution for your open plan space, reception or meeting room. At the same time the natural, sound absorbent material reduces noise distraction and enhances ambiance.

The result? Flexible and inspirational workspaces with that encourage collaboration and learning and stimulate creativity.

For CAD files, images or felt colour samples please contact us at [contact@friendsofwilson.com](mailto:contact@friendsofwilson.com) or phone +44 (0)141 221 1961

## Also in the collection



Facade



Scale



Sequence



Cascade



Flux



Facet

## Friends of Wilson

### Glasgow

Friends of Wilson  
3rd floor studio, Grainstore  
60 Tradeston Street, G5 8BH  
+44 (0)141 221 1961  
[contact@friendsofwilson.com](mailto:contact@friendsofwilson.com)  
[www.friendsofwilson.com](http://www.friendsofwilson.com)

### Partner showrooms

**London**  
Assmann Office Furniture  
75A Turnmill Street, EC1M 5SY  
+44 (0)20 7251 6836

### Manchester

Assmann Office Furniture  
Manchester Showroom  
39 Spring Gardens, M2 2BG  
+44 (0)161 832 9442

Find us on instagram, pinterest and twitter @friendsofwilson